



**Connecting
Healthcare[®]**
Engaging Patients[™]

HIE Success - Physician Education Series

Health Information Exchange

Florida Landscape

Your HIE Faculty:

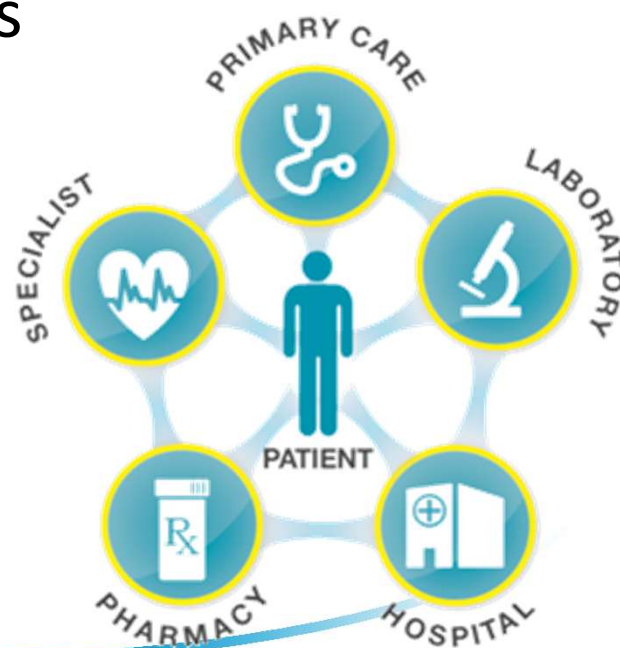
Walt Culbertson

- President and Founder, Connecting Healthcare®
- Host and Producer, Medical Update Show
- Served as Technical and Operations Lead, HIE Project Manager Florida Health Information Exchange
- Served as the State of Florida - Technical SME for the ONC State Health Policy Consortium, Southeast Regional HIT-HIE Collaboration (SERCH)
 - Developed a framework for facilitating cross-border Health Information Exchange (HIE) for Disaster Preparedness in the Southeast and Gulf States
- Past Executive Director and co-Founder, ePrescribe Florida and President, ePrescribe America



Local, Regional, State and National

- HIE exists in many forms and at many levels
- Local and regional hospital systems have established capability to exchange patient information with community providers
- Independent vendors provide services to help with exchange of information
- Florida established a state-wide exchange to connect local networks
- A national network was created to connect states and federal government entities



Types of Health Information Exchange

- There are currently three key forms of health information exchange:
 - Directed Exchange – ability to send and receive secure information electronically between care providers to support coordinated care (DIRECT Standard)
 - Query-based Exchange – ability for providers to find and/or request information on a patient from other providers, often used for unplanned care (CONNECT Standard)
 - Consumer Mediated Exchange – ability for patients to aggregate and control the use of their health information among providers



State Health Information Exchange

The Florida HIE



Florida HIE Background

- 2009: Florida Agency for Health Care Administration (AHCA) applies for Cooperative Agreement funding with Office of the National Coordinator for Health IT (ONC)
- 2010: Florida receives state cooperative agreement award and contracts with Harris Corp to build infrastructure
- 2011: Direct Secure messaging Service and Patient Look-Up Service deployed
- 2012: State to state Direct connections established (HISP)
- 2013: Cooperative Agreement terminated in September, collection of fees begins, Event Notification Service deployed



Florida State HIE Services

- Florida Health Information Exchange (FL-HIE)
 - Patient Look-Up (PLU)
 - Direct Messaging (DM)
 - Event Notification Service (ENS)
- Vendor created solutions using the FL-HIE
 - Hybrid PLU and DM Service
 - Others to come?



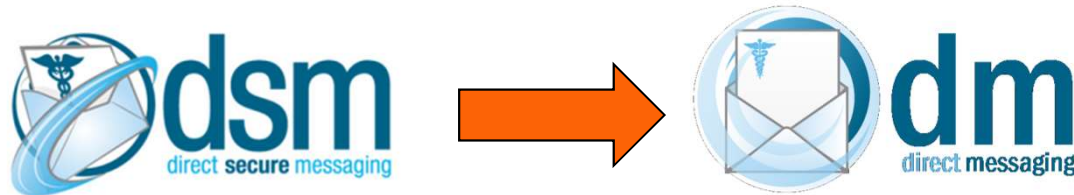
FL-HIE Patient Look-Up



- Connects local, regional and national HIE services through a **federated** model using the national standard (CONNECT) for patient record query and retrieval (network of networks)
 - No centralized state database or patient index
 - Each PLU participant (node) maintains its own records
 - Each participant is required to have safeguards in place
 - Each participant is responsible for vetting user access
- Allows users to search participating health care organizations for individual patient records (with the patient's consent)



FL-HIE Direct Messaging



- DM is a secure email service that can be used via an online portal or through Trust services for Health Information Service Providers (HISPs) using the national DIRECT standard for secure messaging
 - DM is a new pay-for service that replaces the now discontinued free DSM service
 - DM provides an online portal for providers without an electronic health record (EHR) system providing the capability to electronically exchange protected health information



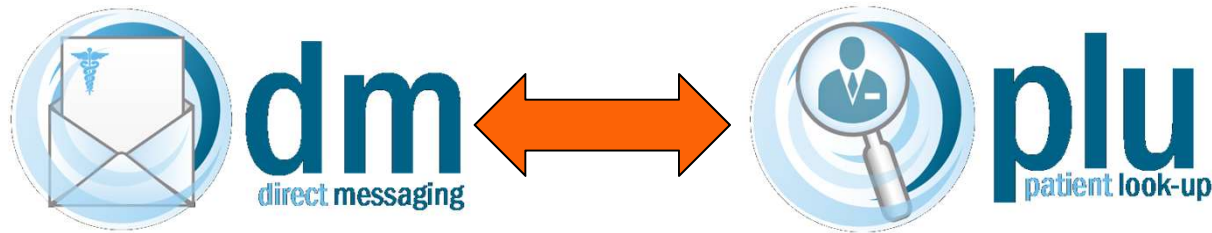
Event Notification Service



- Provides health plans with an electronic notice of their members' hospital admissions, discharges, transfers (ADTs) and emergency department visits
 - Alerts delivered to health plans via DM
 - Safeguards prevent self-pay information from being provided
 - Speeds up the existing process for notifying health plans of patient treatment at participating hospitals
- Health plans can use the information to ensure appropriate follow up care coordination
- Hospitals receiving Low Income Pool (LIP) funding are now required to participate



Hybrid Patient Look-Up



- Hybrid service provides access to PLU via Direct Messaging (DM) without being connected as a PLU participant node
 - Offered by Pensacola based Strategic Health Intelligence (SHI)
 - Prescribing providers establish accounts
 - PLU policies, including patient consent and auditing policies, apply to Hybrid PLU
- Allows individual providers the ability to obtain information about patient treatment from Florida PLU participating nodes



Local Health Information Exchange

Florida Examples

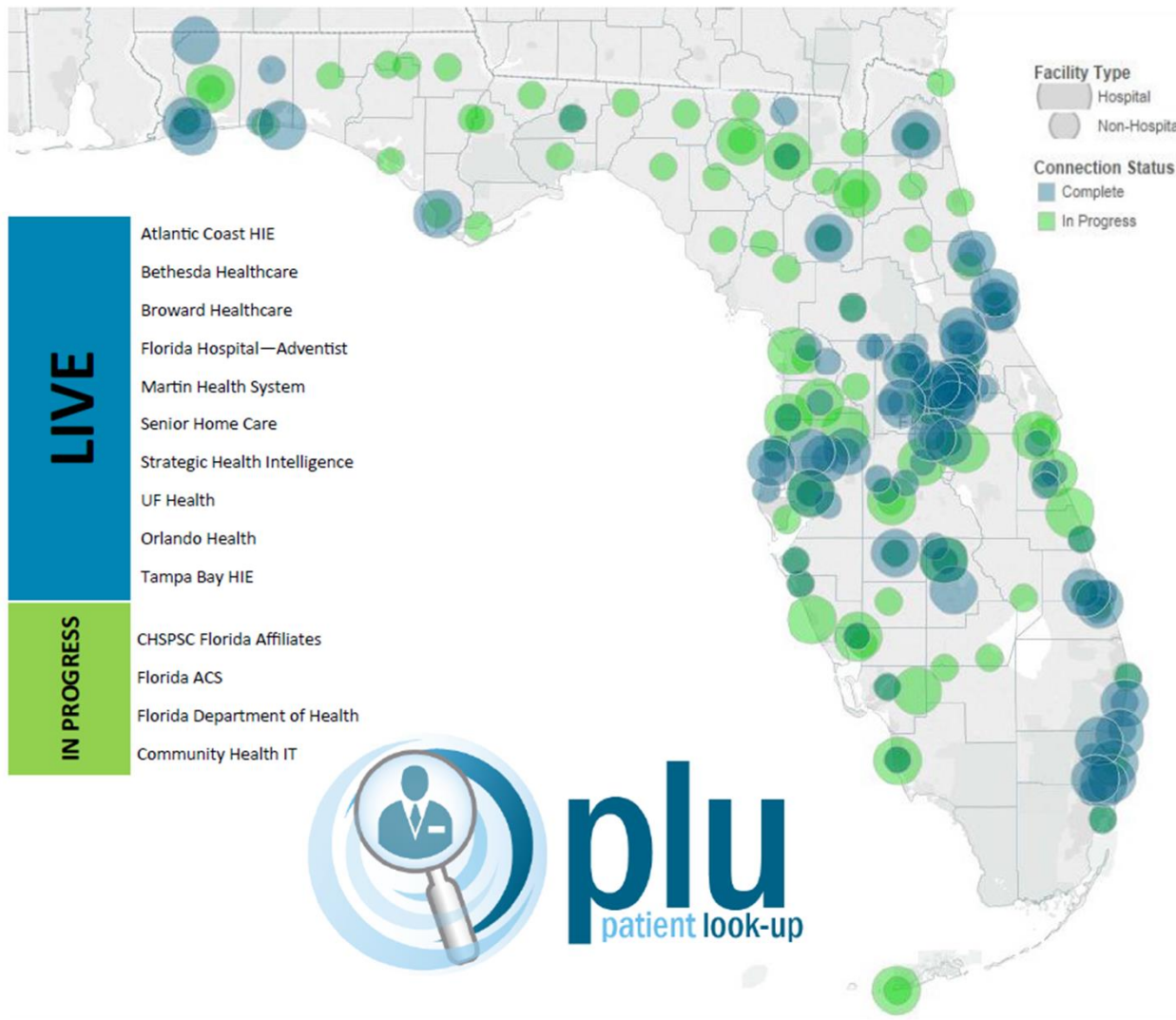


Florida Communities Connected

- As represented by the Florida Health Information Exchange Patient Lookup Connection map, many forms of HIE exist in the state of Florida
- Some HIEs are private hospital systems that have built local or national proprietary infrastructure to connect their facilities and in some cases local area providers
 - Examples include Florida Hospital (Adventist) and UF Health
- Some HIEs are Regional Health Information Organizations (RHIOs) that serve to facilitate local health information exchange between many diverse stakeholders
 - Examples include HIE Networks, Atlantic Coast HIE, TB RHIO
- Some HIEs have built specific capability to support health information exchange regionally or statewide
 - Examples include Community Health IT and Strategic Health



FL HIE Network of Networks PLU Participants as of April 2016





Have Questions?

Visit our Website,
send us an email,
or give us a call!

(904) 435-3456 

(904) 435-3457 

Questions@ 

ConnectingHealthcare.com 

